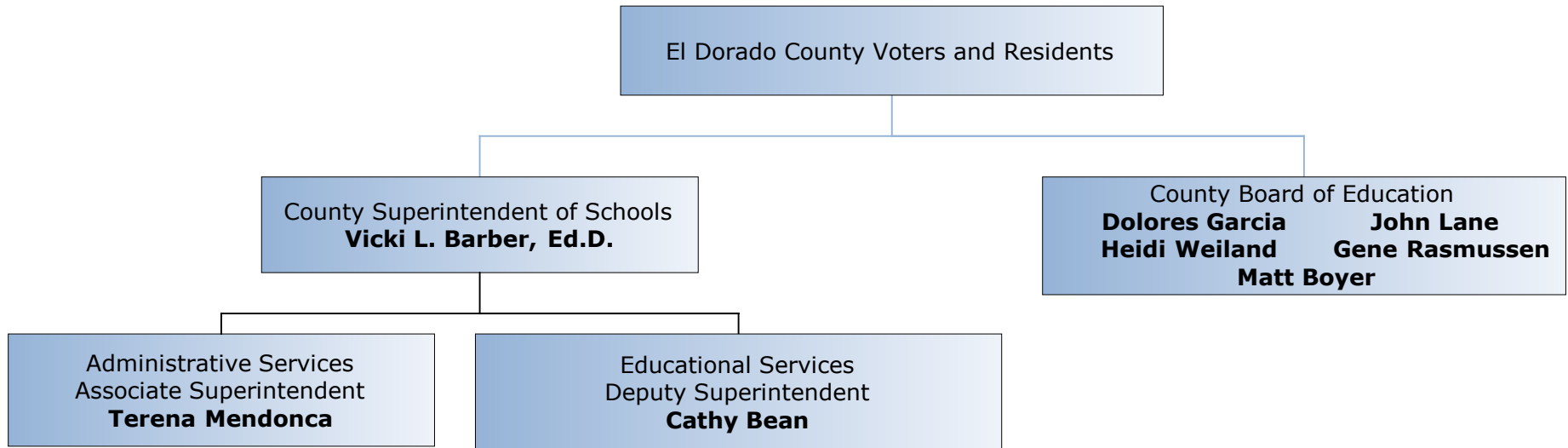


El Dorado County Office of Education 2009-10 Organization Chart



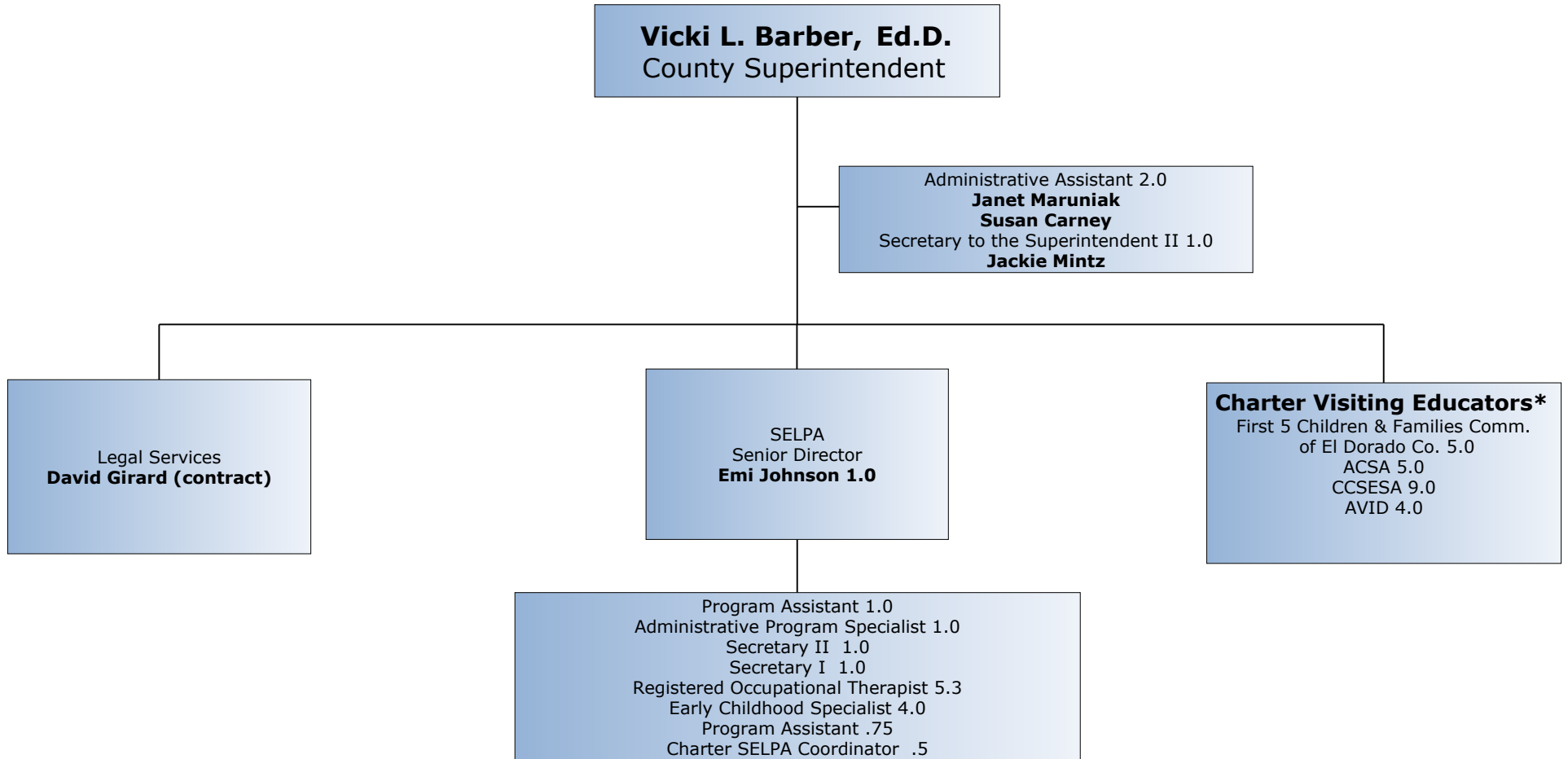
- Matt Boyer:** District 1 (Portions of Buckeye, Latrobe, Rescue, and EDUHSD)
- John Lane:** District 2 (Indian Diggings, portions of Buckeye, Camino, Gold Oak, Lake Tahoe USD, Lake Tahoe CC, Latrobe, Mother Lode, Pioneer, Placerville, Pollock Pines, Silver Fork, and EDUHSD)
- Dolores Garcia:** District 3 (Portions of Buckeye, Camino, Gold Oak, Mother Lode, Pioneer, Placerville, Rescue, and EDUHSD)
- Heidi Weiland:** District 4 (Black Oak Mine, Gold Trail, portions of Buckeye, Camino, Mother Lode, Placerville, Pollock Pines, Rescue, Silver Fork, and EDUHSD)
- Gene Rasmussen:** District 5 (Lake Tahoe USD and Lake Tahoe CC)

The numbers in boxes refer to FTE - full time equivalent positions.

El Dorado County Office of Education, 6767 Green Valley Road, Placerville, CA 95667 (530-622-7130) Fax (530-621-2543)



El Dorado County Office of Education 2009-10 Organization Chart **County Superintendent**



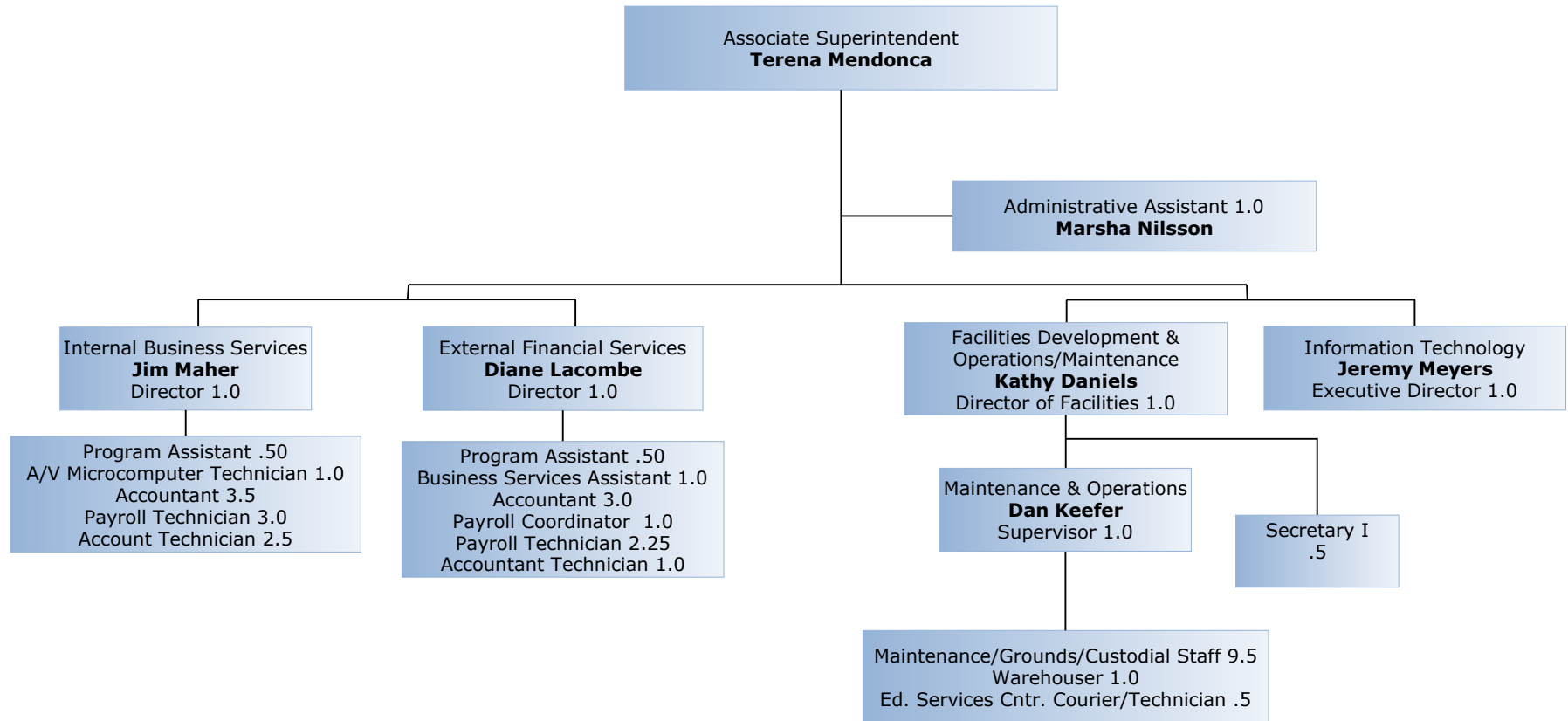
*The El Dorado County Office of Education is reimbursed by agencies for total salary and budget cost for these employees plus payroll service fees.

The numbers in boxes refer to FTE - full time equivalent positions.

El Dorado County Office of Education, 6767 Green Valley Road, Placerville, CA 95667 (530-622-7130) Fax (530-621-2543)



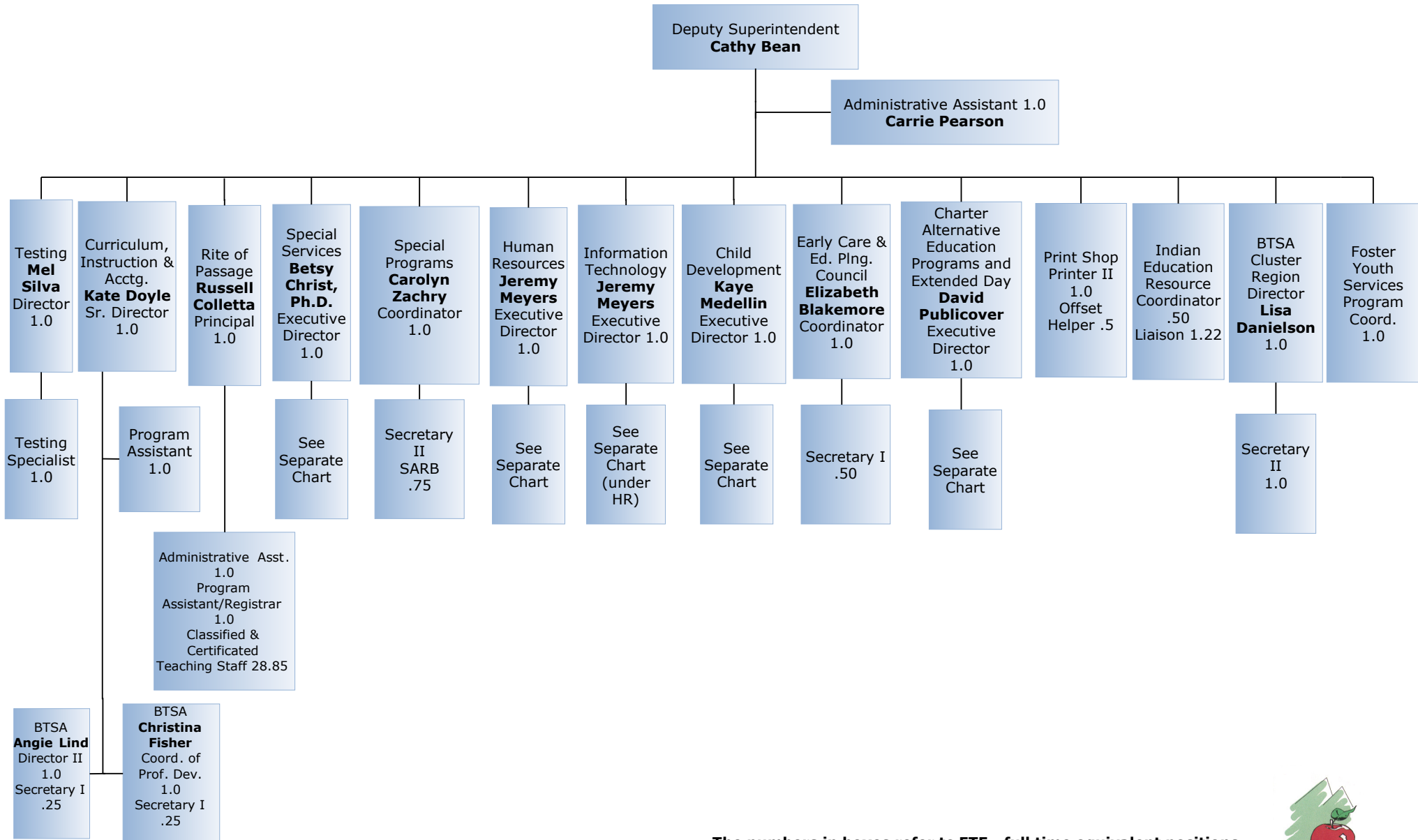
El Dorado County Office of Education 2009-10 Organization Chart **Administrative Services**



The numbers in boxes refer to FTE - full time equivalent positions.



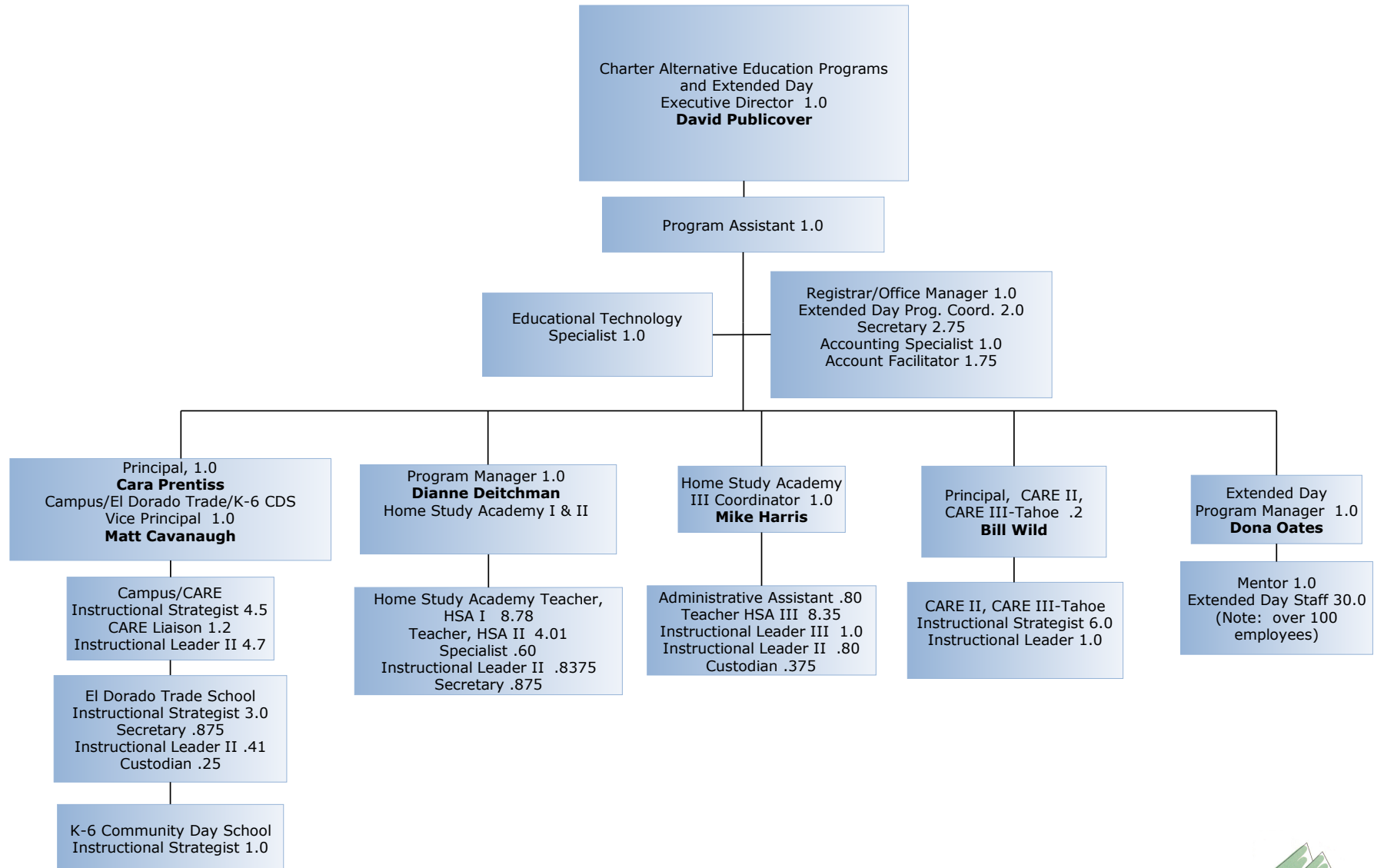
El Dorado County Office of Education 2009-10 Organization Chart Educational Services & Student Programs



The numbers in boxes refer to FTE - full time equivalent positions.



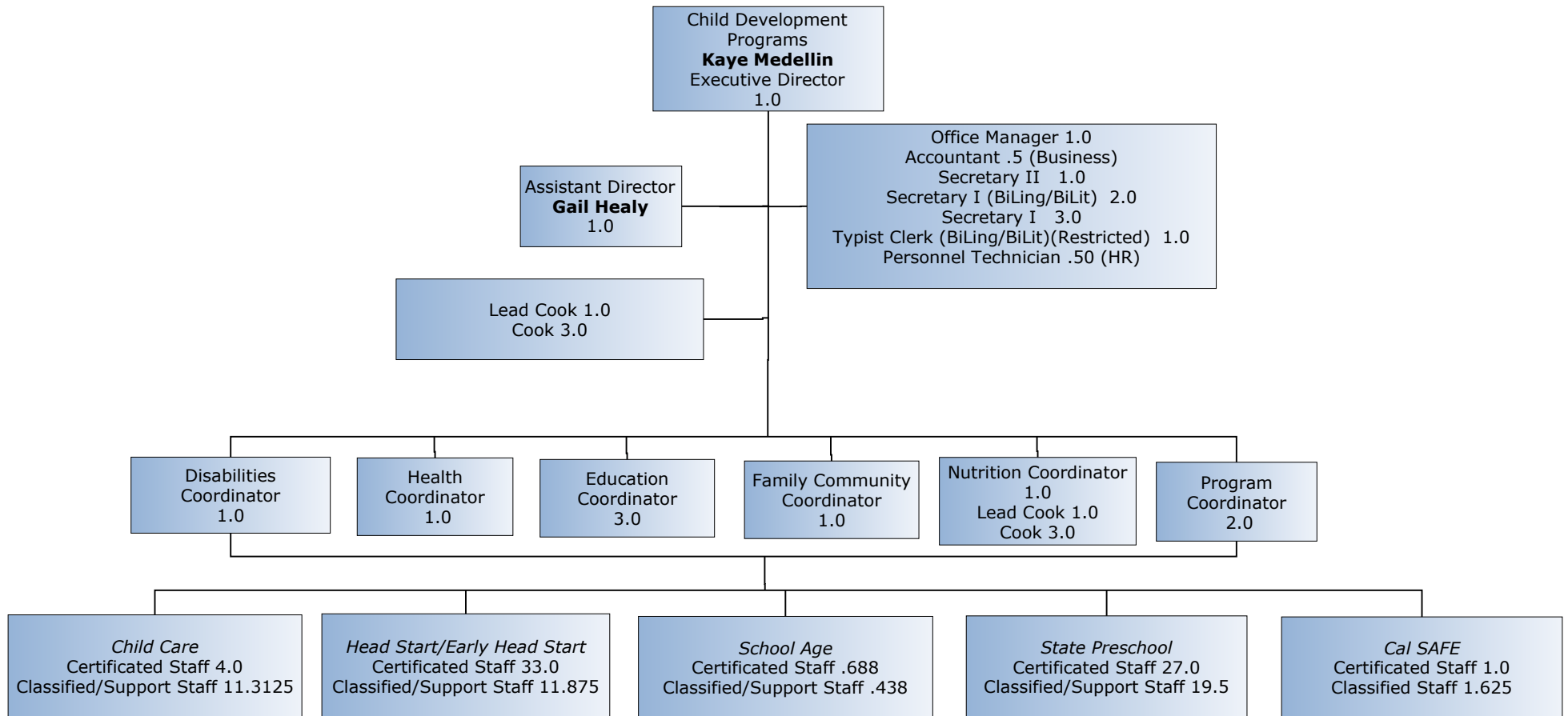
El Dorado County Office of Education
2009-10 Organization Chart
**Charter Alternative Education Programs
and Extended Day**



The numbers in boxes refer to FTE - full time equivalent positions.



El Dorado County Office of Education 2009-10 Organization Chart **Child Development**

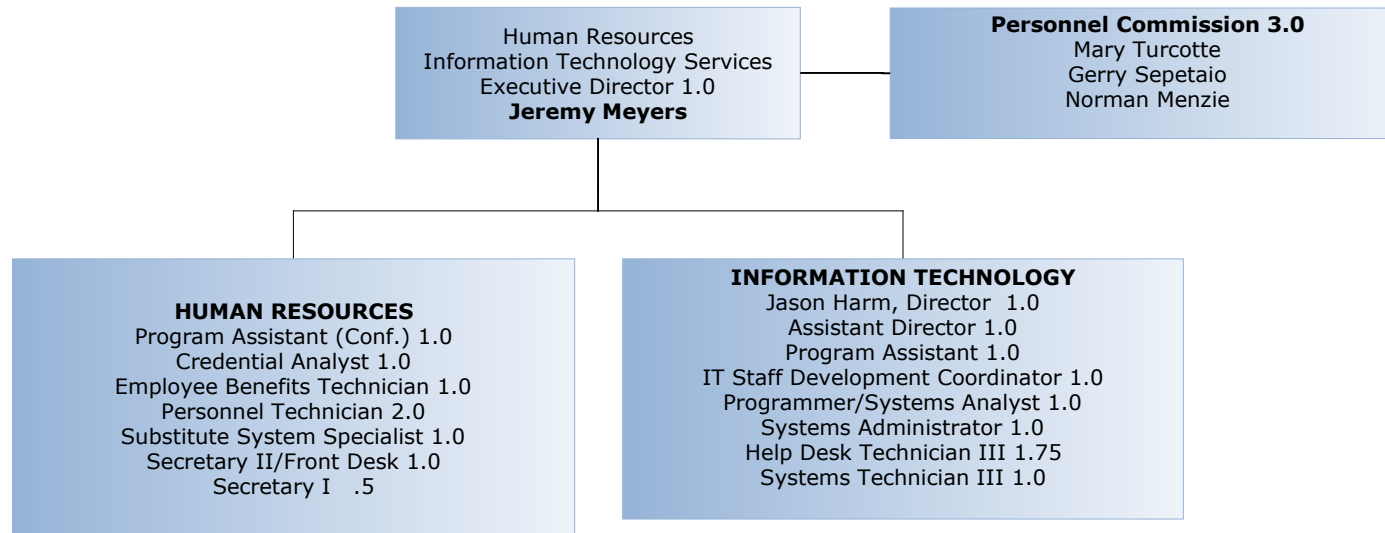


The numbers in boxes refer to FTE - full time equivalent positions.

El Dorado County Office of Education, 6767 Green Valley Road, Placerville, CA 95667 (530-622-7130) Fax (530-621-2543)



El Dorado County Office of Education
2009-10 Organization Chart
Human Resources/Information Technology

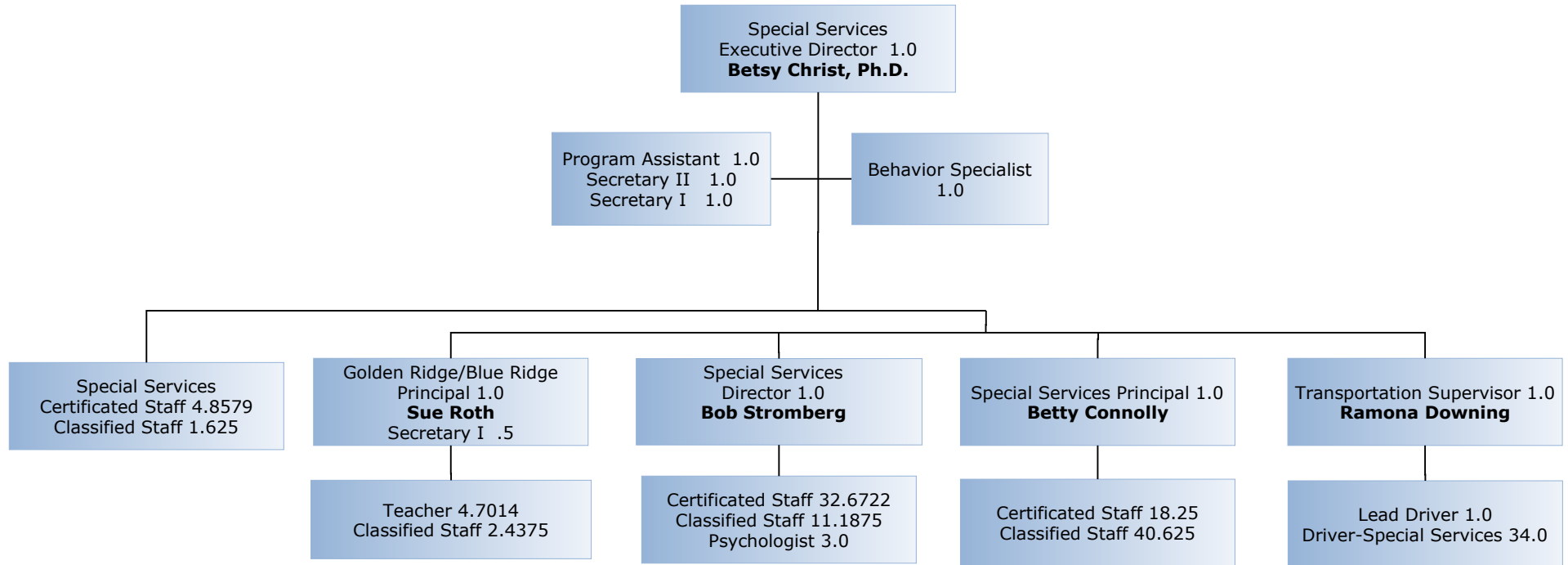


The numbers in boxes refer to FTE - full time equivalent positions.

El Dorado County Office of Education, 6767 Green Valley Road, Placerville, CA 95667 (530-622-7130) Fax (530-621-2543)



El Dorado County Office of Education 2009-10 Organization Chart **Special Services**



The numbers in boxes refer to FTE - full time equivalent positions.

