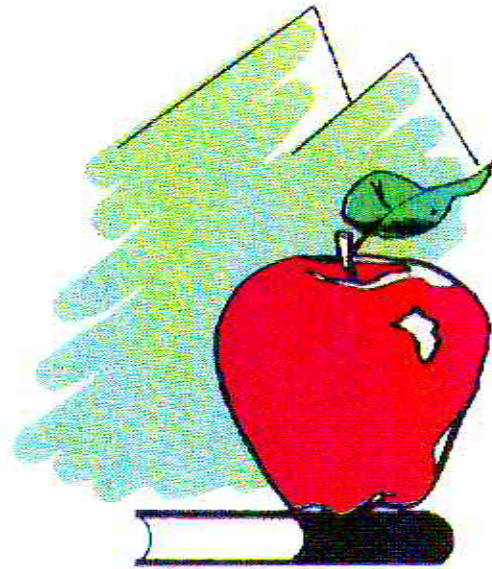


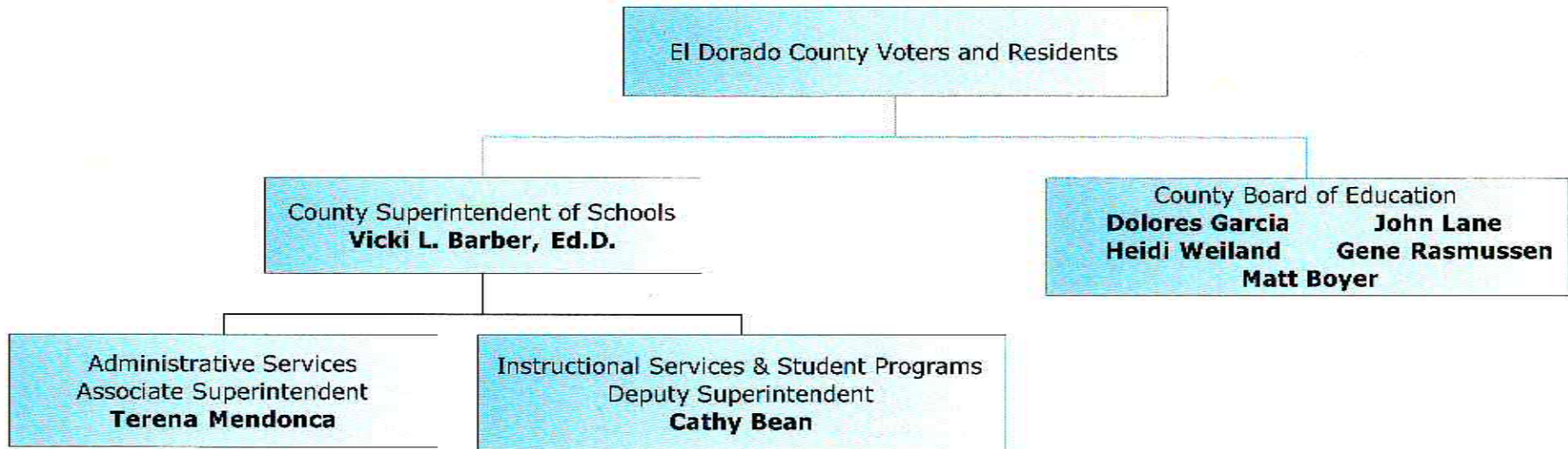
EL DORADO COUNTY
OFFICE OF EDUCATION



2008-09
ORGANIZATIONAL CHART

Second Interim Budget
March 10, 2009

El Dorado County Office of Education 2008-09 Organization Chart



Matt Boyer:

District 1 (Portions of Buckeye, Latrobe, Rescue, and EDUHSD)

John Lane:

District 2 (Indian Diggings, portions of Buckeye, Camino, Gold Oak, Lake Tahoe USD, Lake Tahoe CC, Latrobe, Mother Lode, Pioneer, Placerville, Pollock Pines, Silver Fork, and EDUHSD)

Dolores Garcia:

District 3 (Portions of Buckeye, Camino, Gold Oak, Mother Lode, Pioneer, Placerville, Rescue, and EDUHSD)

Heidi Weiland:

District 4 (Black Oak Mine, Gold Trail, portions of Buckeye, Camino, Mother Lode, Placerville, Pollock Pines, Rescue, Silver Fork, and EDUHSD)

Gene Rasmussen:

District 5 (Lake Tahoe USD and Lake Tahoe CC)

The numbers in boxes refer to FTE - full time equivalent positions.

El Dorado County Office of Education, 6767 Green Valley Road, Placerville, CA 95667 (530-622-7130) Fax (530-621-2543)



El Dorado County Office of Education 2008-09 Organization Chart County Superintendent

Vicki L. Barber, Ed.D.
County Superintendent

Administrative Assistant 2.0
Janet Maruniak
Susan Carney
Secretary to the Superintendent II 1.0
Jackie Mintz

Legal Services
David Girard (contract)

SELPA
Senior Director
Emi Johnson 1.0

Charter Visiting Educators*
First 5 Children & Families Comm.
of El Dorado Co. 5.0
ACSA 5.0
CCSESA 11.0
AVID 4.0

Program Assistant 1.0
Program Specialist 1.0
Secretary II 1.0
Secretary I .5
Registered Occupational Therapist 5.6
Early Childhood Specialist 4.0
Program Assistant .75
Charter SELPA Coordinator .5

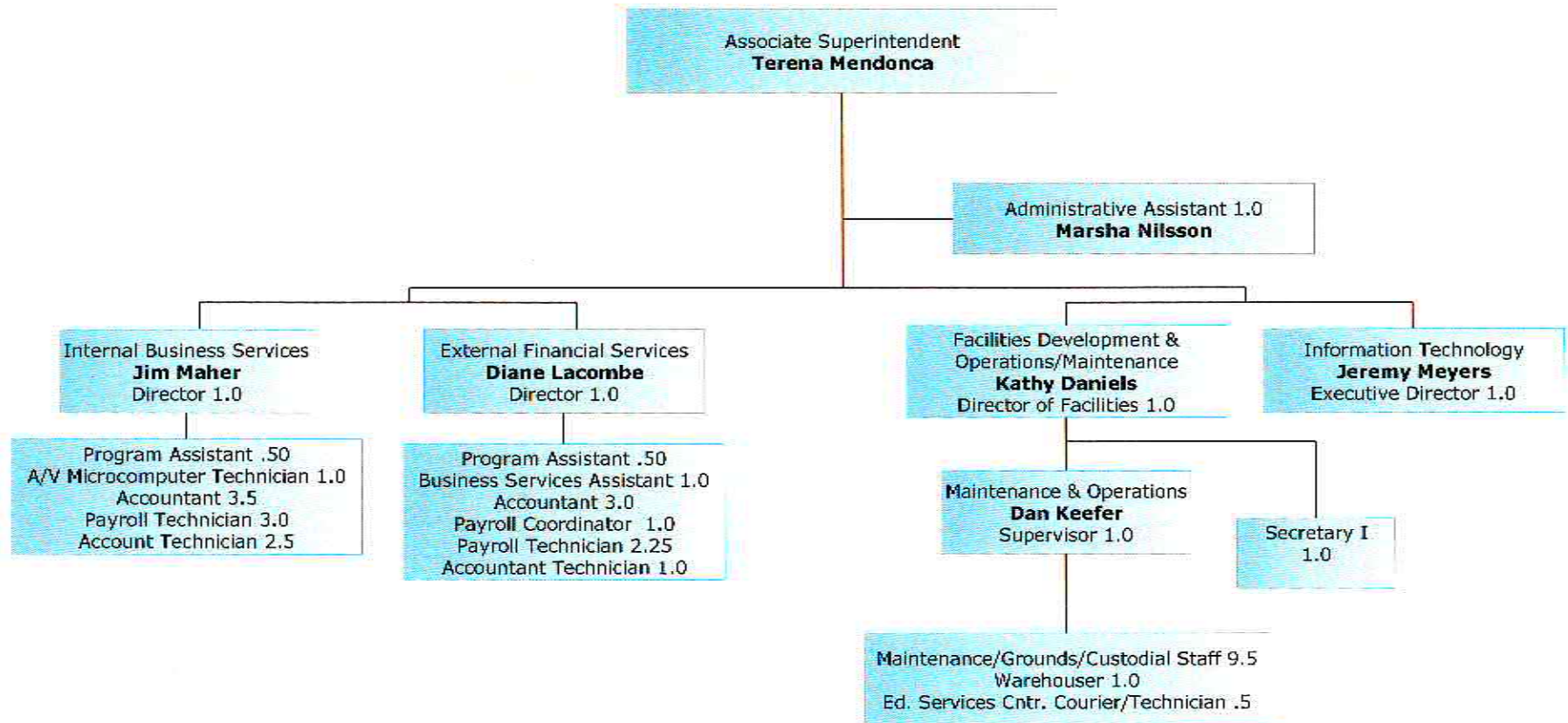
*The El Dorado County Office of Education is reimbursed by agencies for total salary and budget cost for these employees plus payroll service fees.

The numbers in boxes refer to FTE - full time equivalent positions.

El Dorado County Office of Education, 6767 Green Valley Road, Placerville, CA 95667 (530-622-7130) Fax (530-621-2543)



El Dorado County Office of Education 2008-09 Organization Chart Administrative Services

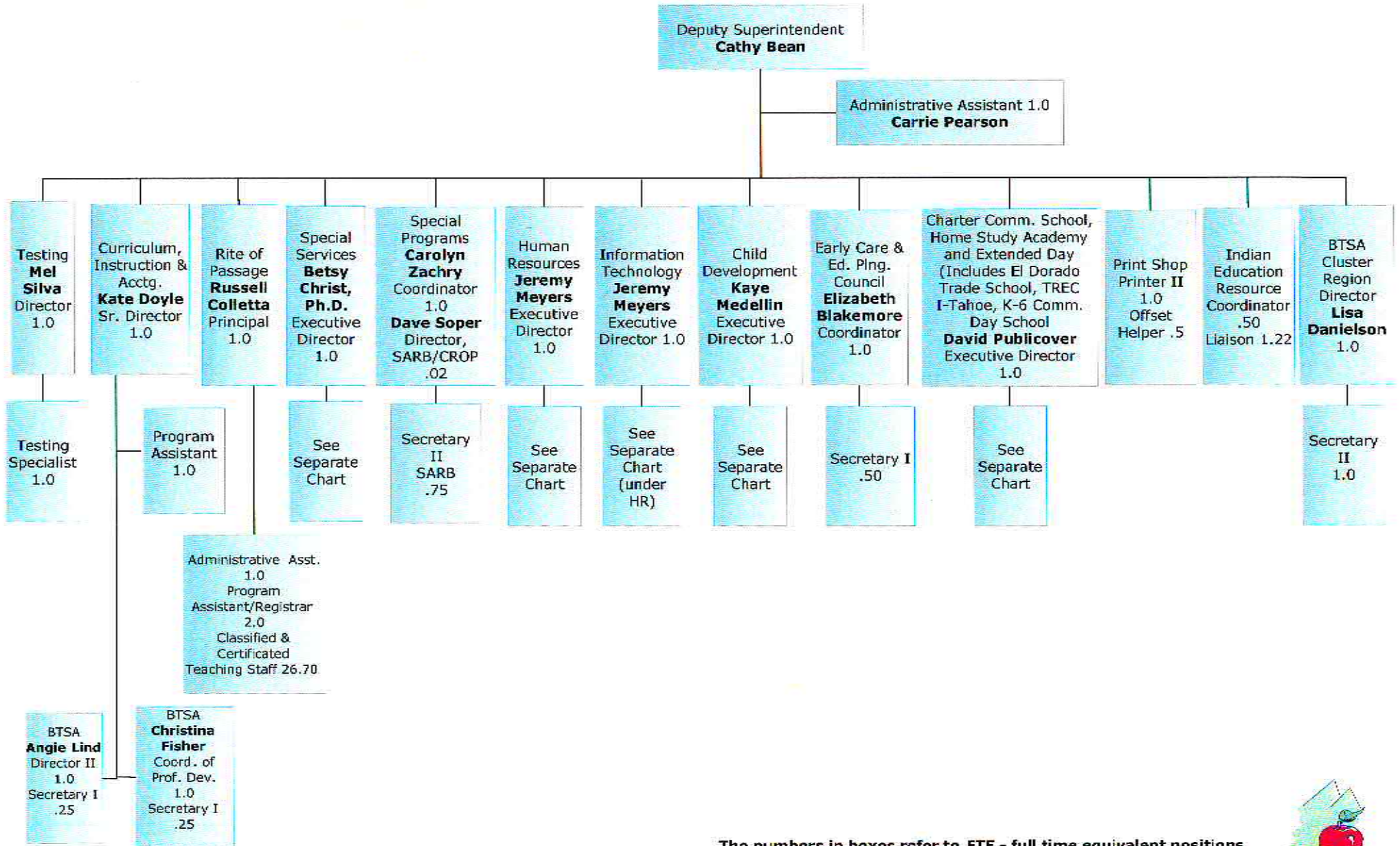


The numbers in boxes refer to FTE - full time equivalent positions.

El Dorado County Office of Education, 6767 Green Valley Road, Placerville, CA 95667 (530-622-7130) Fax (530-621-2543)



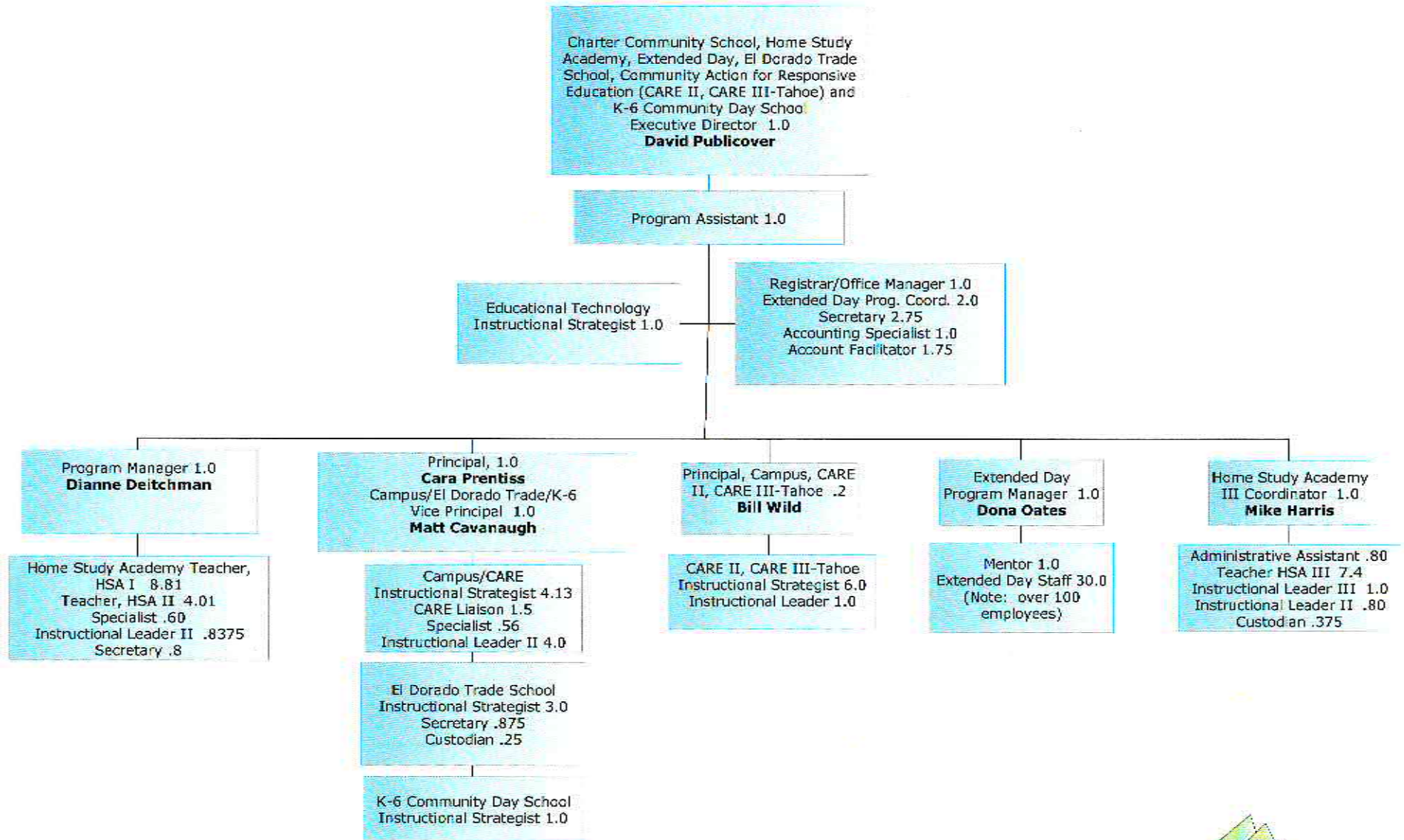
El Dorado County Office of Education 2008-09 Organization Chart Educational Services & Student Programs



The numbers in boxes refer to FTE - full time equivalent positions.



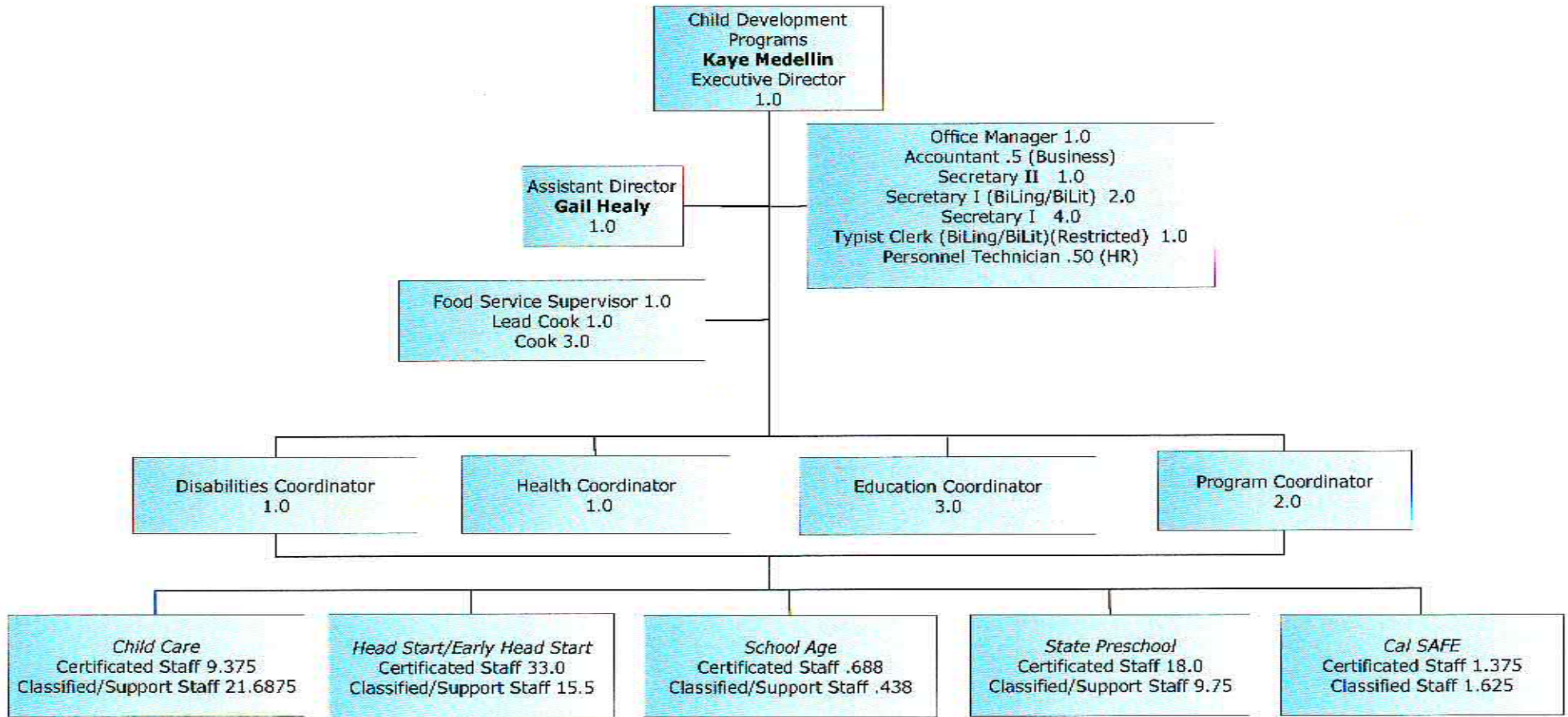
El Dorado County Office of Education
 2008-09 Organization Chart
**Charter Community School, Home Study Academy,
 Extended Day, El Dorado Trade School,
 Community Action for Responsive Education
 (CARE II, CARE III-Tahoe) and K-6 Community Day School**



The numbers in boxes refer to FTE - full time equivalent positions.



El Dorado County Office of Education 2008-09 Organization Chart **Child Development**

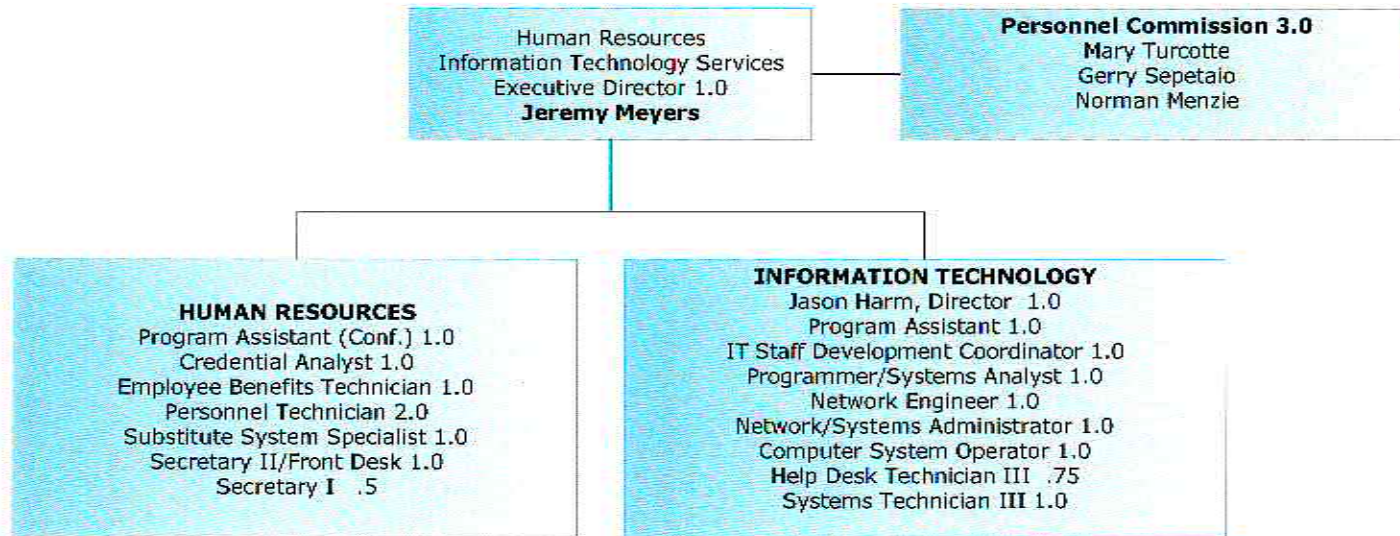


The numbers in boxes refer to FTE - full time equivalent positions.

El Dorado County Office of Education, 6767 Green Valley Road, Placerville, CA 95667 (530-622-7130) Fax (530-621-2543)



El Dorado County Office of Education
2008-09 Organization Chart
Human Resources/Information Technology

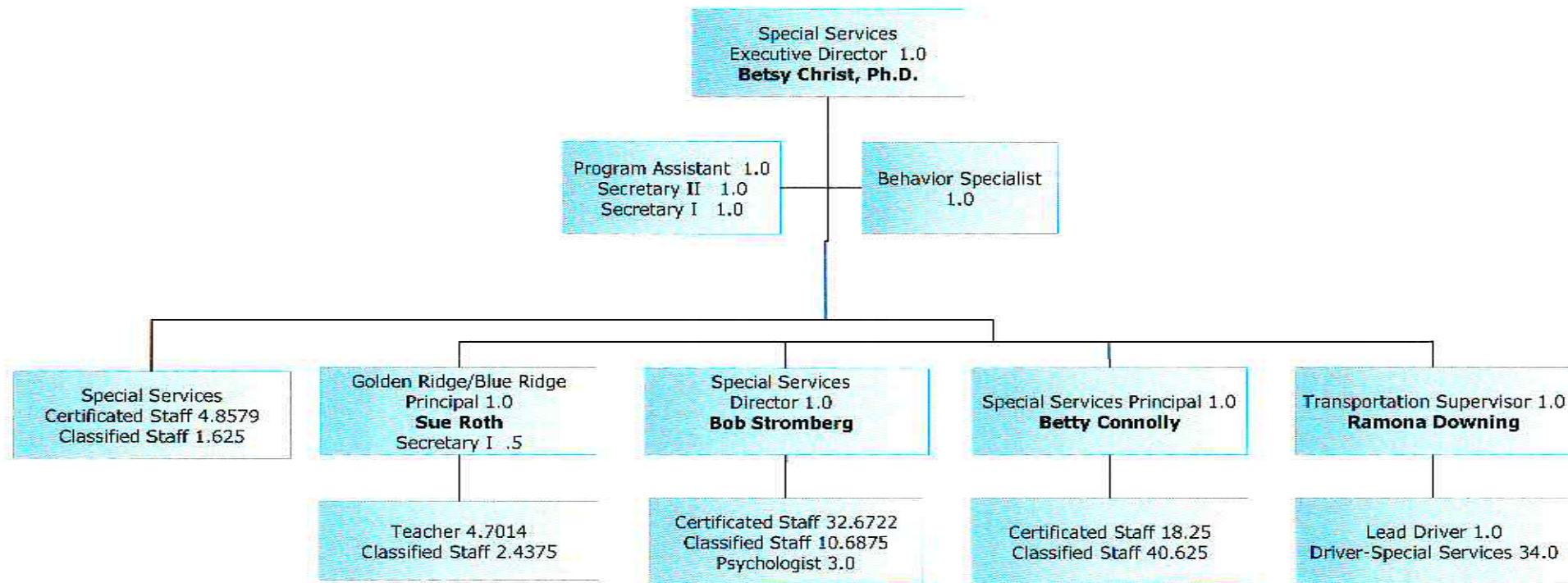


The numbers in boxes refer to FTE - full time equivalent positions.

El Dorado County Office of Education, 6767 Green Valley Road, Placerville, CA 95667 (530-622-7130) Fax (530-621-2543)



El Dorado County Office of Education 2008-09 Organization Chart **Special Services**



The numbers in boxes refer to FTE - full time equivalent positions.

